

TRIPLETWONINE

13 ENDEAVOUR ROAD, CARINGBAH NSW 2229

LANDSCAPE CONCEPT PLAN

CLIENT REVIEW

13.06.2025

ISSUE P

CLIENT:

Aliro 

LANDSCAPE ARCHITECT:



HABIT8

Landscape Architecture & Urbanism

SYDNEY (Gadigal country) BYRON BAY (Bundjalung country)
MELBOURNE (Wurundjeri country) SE QUEENSLAND (Yugambah country)

www.habit8.com.au

DRAWING LIST:

L-01	Coversheet
L-02	Landscape Revision Register
L-03	Landscape Concept: Zones
L-04	Landscape Design Philosophy
L-05	Precedent Images 01
L-06	Precedent Images 02
L-07	Precedent Images 03
L-08	Landscape Illustrative Masterplan
L-09	Landscape Key Plan
L-10	Canopy Cover Plan: Urban Heat Island Effect Mitigation (Development Application Component)
L-11	Landscape Concept Plan 01
L-12	Landscape Concept Plan 02
L-13	Landscape Concept Plan 03
L-14	Landscape Detail Plan: Boulevard Part 1
L-15	Landscape Detail Plan: Boulevard Part 2
L-16	Landscape Detail Plan: Boulevard Part 3
L-17	Landscape Detail Plan: Bldg. 4-6 Common Area
L-18	Landscape Detail Plan: Bldg. 4 Common Area
L-19	Landscape Detail Plan: Bldg. 2-3 Common Area
L-20	Landscape Detail Plan: Bldg. 3-4 Common Area
L-21	Landscape Section A-A
L-22	Landscape Section B-B
L-23	Landscape Section C-C
L-24	Landscape Section D1-D1
L-25	Landscape Section D2-D2
L-26	Landscape Section E-E
L-27	Landscape Section F-F
L-28	Artist's Impression 01
L-29	Artist's Impression 02
L-30	Artist's Impression 03
L-31	Artist's Impression 04
L-32	Proposed Plant Palette 01
L-33	Proposed Plant Palette 02
L-34	Proposed Plant Palette 03
L-35	Proposed Plant Palette 04
L-36	Typical Specification + Maintenance Notes
L-37	Typical Landscape Details

LANDSCAPE REVISION REGISTER

ITEM #	ISSUE	DOCUMENT NUMBER / PAGE	DESIGN CHANGE DESCRIPTION (from DA Issue A)
1	L	Page L08,L13 to L15	Adjust and update entry and boulevard aligning latest masterplan <ul style="list-style-type: none">- Removed totem at island planting- Branding sign moved inside fence line- Relocated bus stop / drop off area- Removed exposed aggregate band, part of zone dedicated to council
2	L	Page L08 and L15	Building 5E's outdoor space was replaced with one Transformer (TX) and one Main Switch Board (MSB) where shrubs were placed around the perimeter and decomposed granite material was utilized to surround the substation without trees.
3	L	Page L08 and L16	Road at the back of Building 6 converted to planting area
4	L	Page L08 and L16	Update and modified Building 4-6 common area <ul style="list-style-type: none">- Locate shade structure- Designated picnic and bbq area- Added seating and feature tree- Change of scale
5	L	Page L08 and L17	Update and modified Building 4 common area <ul style="list-style-type: none">- Added seating and table- Locate shade sail- Designated fitness area- No feature paving
6	L	Page L08 and L19	5m Maintenance access track to Ausgrid requirements located between Building 3 and 4.
7	L	Page L08 and L19	5m Maintenance access track behind Building 3 in the foreshore area is not proposed anymore. This allows further landscaping, tree planting and communal areas.
8	L	Page L08 and L19	Inclusion of designated Building 3-4 common area <ul style="list-style-type: none">- Locate shade structure- Added seating and feature tree- Locate interpretive signage- No feature paving
9	L	Page L08 and L18	Inclusion of designated Building 2-3 common area <ul style="list-style-type: none">- Covered common outdoor area- Added seating and feature trees- Added picinc area- No feature paving
10	L	Page L11 to L19	Change concrete surface material to pavement surface (ac or concrete) at entry and boulevard.
11	L	Page L17,L18,L19 & L21	Allocated path along foreshore, changed from 3m to 1.5m for pedestrian to increase landscaping and planting (plan and sections)
12	L	Page L20	Update swale section to match civil drawings
13	L	Page L24	Additional section thru Building 6 and Solander Fields
14	M	Page L08 and L10	Existing trees in the existing warehouse area are shown
14	N	Page L10	Update the tree canopy computation based on the extent of the development site, increasing the landscape area from 12.81% to 13.45%
15	O	Page L34	Update Proposed Plant Palette 04
16	P	Page L10	Update the tree canopy computation based on the extent of the development site, increasing the landscape area from 13.45% to 13.84% (total site area) and the total number of proposed trees nos. from 387 to 380. Remove council land dedication area
17	P	Page L08,L09,L10,L11,L12 & L14	Additional trees to be retained <ul style="list-style-type: none">- Update tree canopy computation- Update council land dedication line- Additional landscape concept plan- Update legends

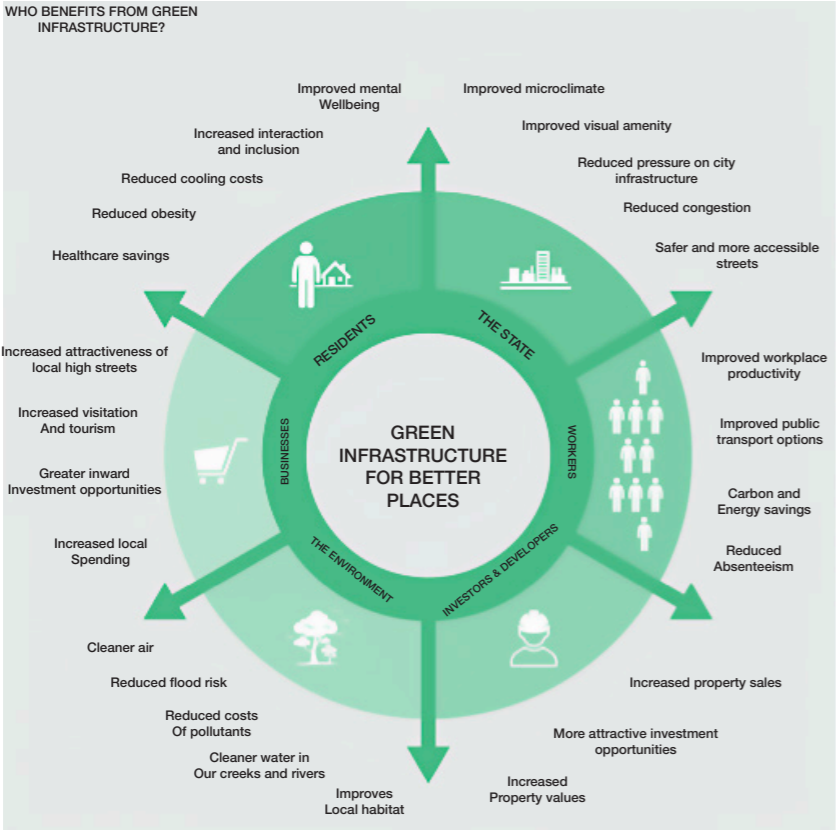
LANDSCAPE CONCEPT : ZONES



KEY

- THE MAIN ENTRY RD (THE SPINE)**
 - FEATURE CANOPY AVENUE TREES AND STRUCTURED LANDSCAPE
 - LIGHTING
 - CHANGING SURFACE MATERIALS
 - FURNITURE AND WAYFINDING
 - DRY CREEK BED SWALE (BIO-FILTRATION AND WSUD)
 - CANOPY CONNECTIVITY
- THE FORESHORE**
 - RE-VEGETATION WITH RIPARIAN SPECIES
 - ACCESS TO PUBLIC BOARDWALK
 - PASSIVE RECREATION OPPORTUNITIES FOR EMPLOYEES AND VISITORS
- THE EDGES**
 - EXISTING HEDGING ALONG CAPTAIN COOK DRIVE TO BE REMOVED AND REPLACED
 - EMBELLISH SETBACK BOUNDARY PLANTING AND RETAIN CANOPY TREES WHERE POSSIBLE
 - CANOPY CONNECTIVITY
- BUILDING FRONTAGES AND CARPARKING**
 - CANOPY SHADE TREES
 - FORE-COURT PLANTING
 - STAFF RECREATION AREAS WITH FURNITURE AND SHADE
- ENTRY AREA**
 - FEATURE ENTRY SIGNAGE WALL AND PLANTING
 - EXISTING TREES RETAINED (AREA DETERMINED BY COUNCIL)
- EXISTING LANDSCAPE**
 - NO ALTERATIONS PROPOSED
- OUTDOOR COMMON OPEN SPACE**
 - FEATURE SHADE TREE
 - FURNITURE AND POTENTIAL ART WORK ZONE
 - PERGOLA SHADE STRUCTURE





Green Infrastructure is as crucial to the city as transport, cultural and communications infrastructure. It delivers a range of benefits including:

- Healthy living
- Mitigating flooding
- Improving air and water quality
- Cooling the urban environment
- Encouraging walking and cycling
- Enhancing biodiversity and ecological resilience
- Absorbing and transforming waste.

The four main principles associated with the NSW Greener Places Policy prepared by the Government Architect NSW (2020) are:

- a) Principle 1: Integration:** We propose a multi-purpose infrastructure strategy that mimics nature, provides critical ecosystem services and promotes healthy and active living. We propose to combine green space with industrial urban development and WSUD infrastructure.
- b) Principle 2: Connectivity:** We aim to create a network of high quality open streetscape and spaces that connect with each warehouse and office, public transport hubs and vegetation corridors. The network includes physical and functional connections that benefit people, wildlife and the logistics nature of the estate.

c) Principle 3: Multifunctionality: Our proposed green space infrastructure is designed to be high quality and high performing, producing ecological, social, environmental and economic benefits. The multifunctionality of our design proposal allows the sites green infrastructure to deliver multiple ecosystem, environmental and other services simultaneously.

d) Principle 4: Participation: We have followed a planning process that has been open to all, transparent and incorporates the knowledge and needs of all interested and diverse parties. The process has involved stakeholders in development, Sutherland Shire Council and the industrial open market through tenants and the companies they represent. The process has incorporated local and state Green Infrastructure policies and actions.

PROJECT OUTCOMES:

- 1. Conservation of the natural environment.**
This project will lead to the future enhancement of canopy tree planting, promotion of social, cultural, recreational, and educational opportunities within natural landscapes.
- 2. Increased access to open space**
Improved connections to local destinations. The quantity, quality, distribution, and accessibility of Industrial office green spaces enables the delivery of multifunctional spaces that promote healthy work environments.
- 3. Improved connectivity to promote active living**
Improvements to the office communal areas and frontages that promote exercise and alternative modes of transport such as walking and cycling.
- 4. Increase urban greening to ameliorate climate extremes**
We incorporate the design of green cover strategies including street trees, front setback canopy trees, cooler pavement materials and WSUD.
Our landscape scheme provides benefits such as improved amenity, comfort, health, reduced stormwater run-off, improved air and water quality, energy and resource efficiency.

a) THE RE-VEGETATION STRATEGY

The strategy for re-vegetating the site focuses on canopy tree planting to reduce the “urban heat island effect”. We have proposed a mix of local endemic, native and exotic trees to strengthen the urban design principles and to comply with current sustainability guidelines. Street verges, buffer tree planting to boundaries are densely planted with canopy trees ranging from 6m to 15m+ in height and canopy spread. Bush regeneration shall be implemented along major road setbacks for existing vegetation buffers. Car parks hard surfaces are shaded by tree planting between car parking spaces.

Cycleways and path systems are also shaded by canopy tree planting. WSUD principles including soft engineering through bio-swales, detention basins and grey water re-use (co-ordinated with the civil engineer) shall help in maintaining and managing the re-vegetation areas.

b) STREETSAPES + PUBLIC DOMAIN

All streetscapes and setbacks have been designed to be multifunctional and provide connectivity throughout the Estate for vehicles, pedestrians and cyclists. The streets and landscaped setbacks form the main “green spines” throughout development. The streetscape has been designed in accordance with Sutherland Shire Council’s Public Domain policy. The main features of the public domain are:

1. Provide tree canopy cover and reduce the “urban heat island effect”;
2. Provide safe and comfortable transit for pedestrians and cyclists;
3. Strengthen canopy connectivity throughout the Estate;
4. Allow multi-functionality through the revisions of various transit lanes such as heavy vehicle, cars, pedestrian footpaths and cycleways;
5. Soften and screen the bulk of the warehouses;
6. Help create a cooler microclimate around buildings and along pedestrian routes;
7. Provide multiple opportunities to create an address for each warehouse project;
8. Integrate lighting for safety;
9. Allow safe passage for visitors and workers to experience the conservation area corridors interface;
10. Strengthen the connection to Endeavour Rd, Captain Cook Drive and surrounding areas
11. Incorporate WSUD principles into the including water quality bio-swales and vegetated detention basins

PRECEDENT IMAGES 01

MAIN ENTRY RD ("THE SPINE")

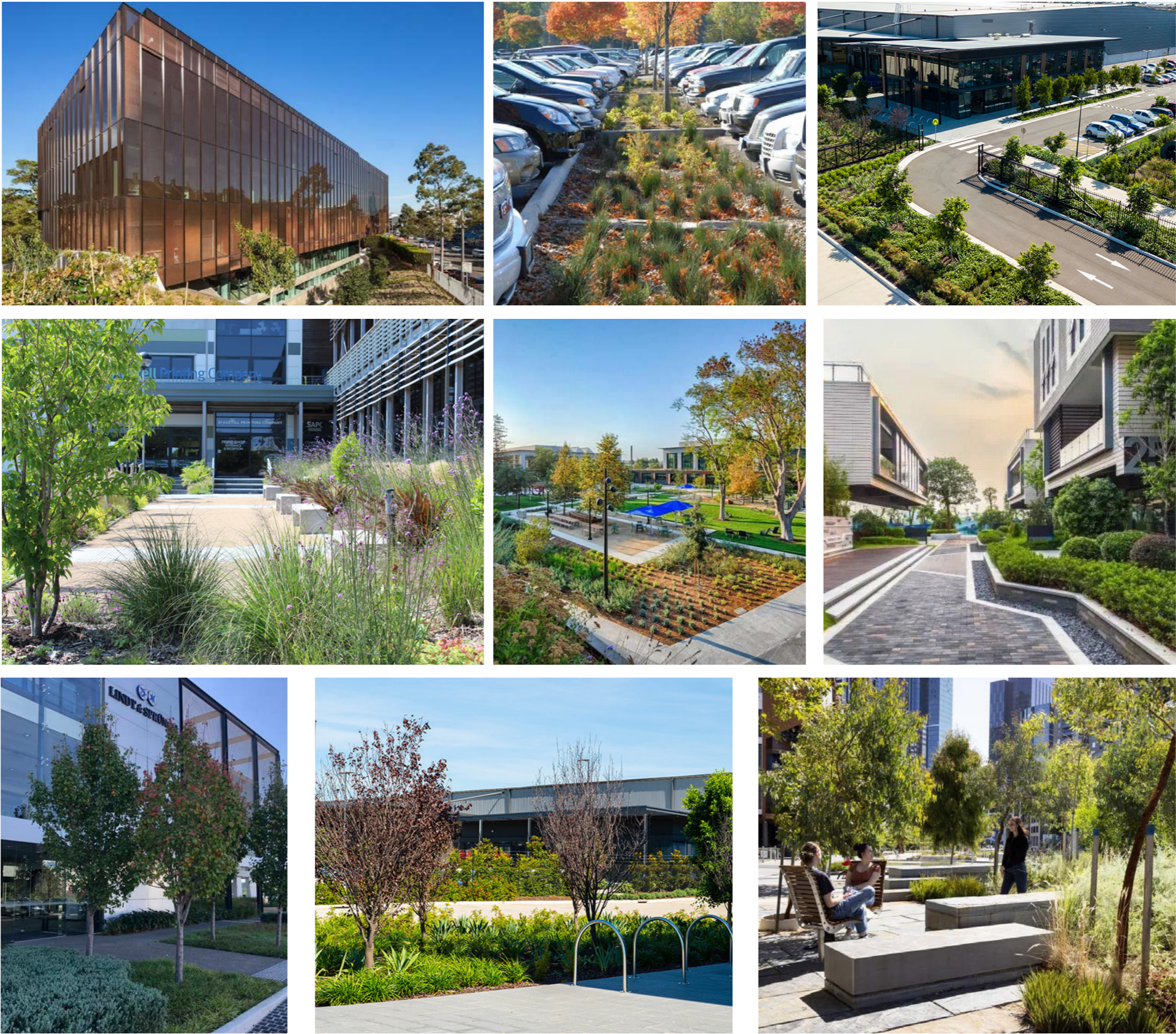


"THE SWALE"



PRECEDENT IMAGES 02

BUILDING FRONTAGES AND CAR PARKING



PROJECT	DRAWING TITLE	PROJECT NO.	PURPOSE	SCALE	REVISION	DATE	DRAWN	CHECKED	PAGE	CLIENT
---------	---------------	-------------	---------	-------	----------	------	-------	---------	------	--------

TRIPLETWONINE
13 ENDEAVOUR RD, CARINGBAH NSW
2229

PRECEDENT IMAGES 02

H8-22053

CLIENT REVIEW

NTS

P

13.06.2024

KM/DG/
DF/GP

DV

L06

Aliro

PRECEDENT IMAGES 03

THE FORESHORE



LANDSCAPE ILLUSTRATIVE MASTERPLAN



KEY

SITE BOUNDARY

COUNCIL LAND DEDICATION

EXISTING OVERHEAD POWER CABLE EASEMENT

RW

RETAINING WALL TO ENGINEER'S DETAILS

FORESHORE LINE

EXISTING TREES TO BE RETAINED (REFER TO ARBORIST REPORT)

ADDITIONAL EXISTING TREE TO BE RETAINED (REFER TO ARBORIST REPORT)

PROPOSED TREE PLANTING REFER TO PLANT SCHEDULE

TURF REFER TO DETAIL

MASS PLANTING BEDS REFER TO DETAIL AND PLANT SCHEDULE

SOIL AREA / VOLUME FOR EXISTING TREES

PAVEMENT SURFACE (AC OR CONCRETE) TO ENGINEER'S DETAILS

DECOMPOSED GRANITE PERMEABLE PATH

P

P

NOTE:

REFER TO ARBORIST REPORT + PLANS FOR EXISTING TREES TO BE REMOVED

PROJECT

DRAWING TITLE

PROJECT NO.

PURPOSE

SCALE

REVISION

DATE

DRAWN

CHECKED

PAGE

CLIENT

TRIPLETONINE

LANDSCAPE ILLUSTRATIVE MASTERPLAN

H8-22053

CLIENT REVIEW

1:2000@A3

P

13.06.2024

KM/DG/DF/GP

DV

L08

Aliro

020406080100m

SCALE 1:2000 AT A3

HABIT8

Landscape Architecture & Urbanism

SYDNEY (Darug country)

MELBOURNE (Wurundjeri country)

BYRON BAY (Bundjalung country)

SE QUEENSLAND (Yugambah country)

www.habit8.com.au

LANDSCAPE KEY PLAN



CANOPY COVER PLAN: URBAN HEAT ISLAND EFFECT MITIGATION
DEVELOPMENT APPLICATION COMPONENT



KEY

- SITE BOUNDARY
- EXISTING OVERHEAD POWER CABLE EASEMENT
- RETAINED TREE CANOPY
- REMOVED TREE CANOPY
- PROPOSED TREE CANOPY

DEVELOPMENT SITE AREA (SQM)

	ISSUE A (TOTAL SITE AREA)	ISSUE P (TOTAL SITE AREA)
SITE AREA	123,898.13	123,898
TOTAL PROPOSED TREE NO.	337	380
TOTAL PROPOSED CANOPY COVER	8,463	9,111
TOTAL RETAINED CANOPY COVER	20,467.22	19,722.72
CANOPY COVER	28,930.22	28,833.72
TOTAL REMOVED CANOPY COVER	21,190.23	20,036.15
TOTAL CANOPY PERCENTAGE	23.35%	23.27%
LANDSCAPE AREA SQM (W/ DECO GRANITE)	15,877.95	17,135.69
TOTAL LANDSCAPE PERCENTAGE	12.81%	13.84%
TOTAL LANDSCAPE PERCENTAGE (WITHOUT COUNCIL LAND DEDICATION AREA)		13.17%
EXISTING SITE CANOPY COVER (RETAINED + REMOVED CANOPY COVER)	41,657.45	39,758.87
PROPOSED CANOPY COVER (PROPOSED + RETAINED CANOPY COVER)	28,930.22	20,036.15

TREE CANOPY COVER

TREE CANOPY	CANOPY AREA (m²)	ISSUE A (TOTAL SITE AREA)		ISSUE P (TOTAL SITE AREA)	
		TREE NO.	TOTAL CANOPY COVER (m²)	TREE NO.	TOTAL CANOPY COVER (m²)
3m	7	115	805	125	875
5m	20	65	1300	93	1860
6m	30	104	3120	110	3300
8m	50	32	1600	35	1750
10m	78	21	1638	17	1326

LANDSCAPE CONCEPT PLAN 01



KEYPLAN

KEY

- SITE BOUNDARY
- RW --- RETAINING WALL TO ENGINEER'S DETAILS
- PROPOSED TREE PLANTING REFER TO PLANT SCHEDULE
- TURF REFER TO DETAIL
- MASS PLANTING BEDS REFER TO DETAIL AND PLANT SCHEDULE
- SOIL AREA / VOLUME FOR EXISTING TREES
- PAVEMENT SURFACE (AC OR CONCRETE) TO ENGINEER'S DETAILS
- EXISTING TREES TO BE RETAINED (REFER TO ARBORIST REPORT)
- ADDITIONAL EXISTING TREE TO BE RETAINED (REFER TO ARBORIST REPORT)

NOTE:
REFER TO ARBORIST REPORT + PLANS FOR EXISTING TREES TO BE REMOVED

DESIGN NOTES

1. CAPTAIN COOK DRIVE LANDSCAPE SETBACK (NEW)
2. CARPARK
3. CARPARK SHADE TREES
4. LARGE CANOPY TREES
5. EXISTING FENCE ALONG BOUNDARY RETAINED
6. STAFF OUTDOOR AREA



LANDSCAPE CONCEPT PLAN 02



KEYPLAN

KEY

- SITE BOUNDARY
- COUNCIL LAND DEDICATION
- RW RETAINING WALL TO ENGINEER'S DETAILS
- STEEL EDGE
- 2100mm HIGH OUTDOOR AREA FEATURE FENCE
- PROPOSED TREE PLANTING REFER TO PLANT SCHEDULE
- TURF REFER TO DETAIL
- MASS PLANTING BEDS REFER TO DETAIL AND PLANT SCHEDULE
- SOIL AREA / VOLUME FOR EXISTING TREES
- PAVEMENT SURFACE (AC OR CONCRETE) TO ENGINEER'S DETAILS
- EXISTING TREES TO BE RETAINED (REFER TO ARBORIST REPORT)
- ADDITIONAL EXISTING TREE TO BE RETAINED (REFER TO ARBORIST REPORT)

NOTE:

REFER TO ARBORIST REPORT + PLANS FOR EXISTING TREES TO BE REMOVED

DESIGN NOTES

- CAR PARK SHADE TREES
- FEATURE ENTRY SIGNAGE WALL + PLANTING
- EXISTING TREES TO BE RETAINED + AREA DETERMINED BY COUNCIL
- PYLON SIGN
- CARPARK
- STAFF OUTDOOR AREA



LANDSCAPE CONCEPT PLAN 03



LANDSCAPE DETAIL PLAN: BOULEVARDE PART 1 (ENTRY)



KEYPLAN



KEY

- SITE BOUNDARY
- COUNCIL LAND DEDICATION
- EXISTING OVERHEAD POWER CABLE EASEMENT
- RW RETAINING WALL TO ENGINEER'S DETAILS
- POTENTIAL ART WORK ZONE
- STEEL EDGING
- 2100mm HIGH OUTDOOR AREA FEATURE FENCE
- PROPOSED TREE PLANTING REFER TO PLANT SCHEDULE
- MASS PLANTING BEDS REFER TO DETAIL AND PLANT SCHEDULE
- SOIL AREA / VOLUME FOR EXISTING TREES
- PAVEMENT SURFACE (AC OR CONCRETE) TO ENGINEER'S DETAILS
- EXISTING TREES TO BE RETAINED (REFER TO ARBORIST REPORT)
- ADDITIONAL EXISTING TREE TO BE RETAINED (REFER TO ARBORIST REPORT)

DESIGN NOTES

- CAR PARK SHADE TREES
- FEATURE ENTRY SIGNAGE WALL
- POTENTIAL ART WORK ZONE
- EXISTING TREES TO BE RETAINED + AREA DETERMINED BY COUNCIL
- COLOURFUL LOW PLANTING
- FEATURE FENCE
- FEATURE BISMARCKIA ENTRY PALM
- EXISTING DATE PALM RETAINED
- PYLON SIGN



LANDSCAPE DETAIL PLAN: BOULEVARDE PART 2



- KEY**
- SITE BOUNDARY
 - EXISTING OVERHEAD POWER CABLE EASEMENT
 - RW RETAINING WALL TO ENGINEER'S DETAILS
 - POTENTIAL ART WORK ZONE
 - PROPOSED TREE PLANTING REFER TO PLANT SCHEDULE
 - DG DECOMPOSED GRANITE
 - MASS PLANTING BEDS REFER TO DETAIL AND PLANT SCHEDULE
 - PAVEMENT SURFACE (AC OR CONCRETE) TO ENGINEER'S DETAILS

- DESIGN NOTES**
- PAVED SURFACE
 - CAR PARK SHADE TREES
 - SANDSTONE LOG SEATS
 - SANDSTONE CUBE SEATS
 - SITTING WALLS
 - BOLLARD LIGHTS
 - POTENTIAL ART WORK ZONE
 - BIKE RACKS TO ARCHITECT'S DETAILS
 - PALMS IN PAVING
 - RAIN GARDEN
 - SEATING AREA

LANDSCAPE DETAIL PLAN: BOULEVARDE PART 3



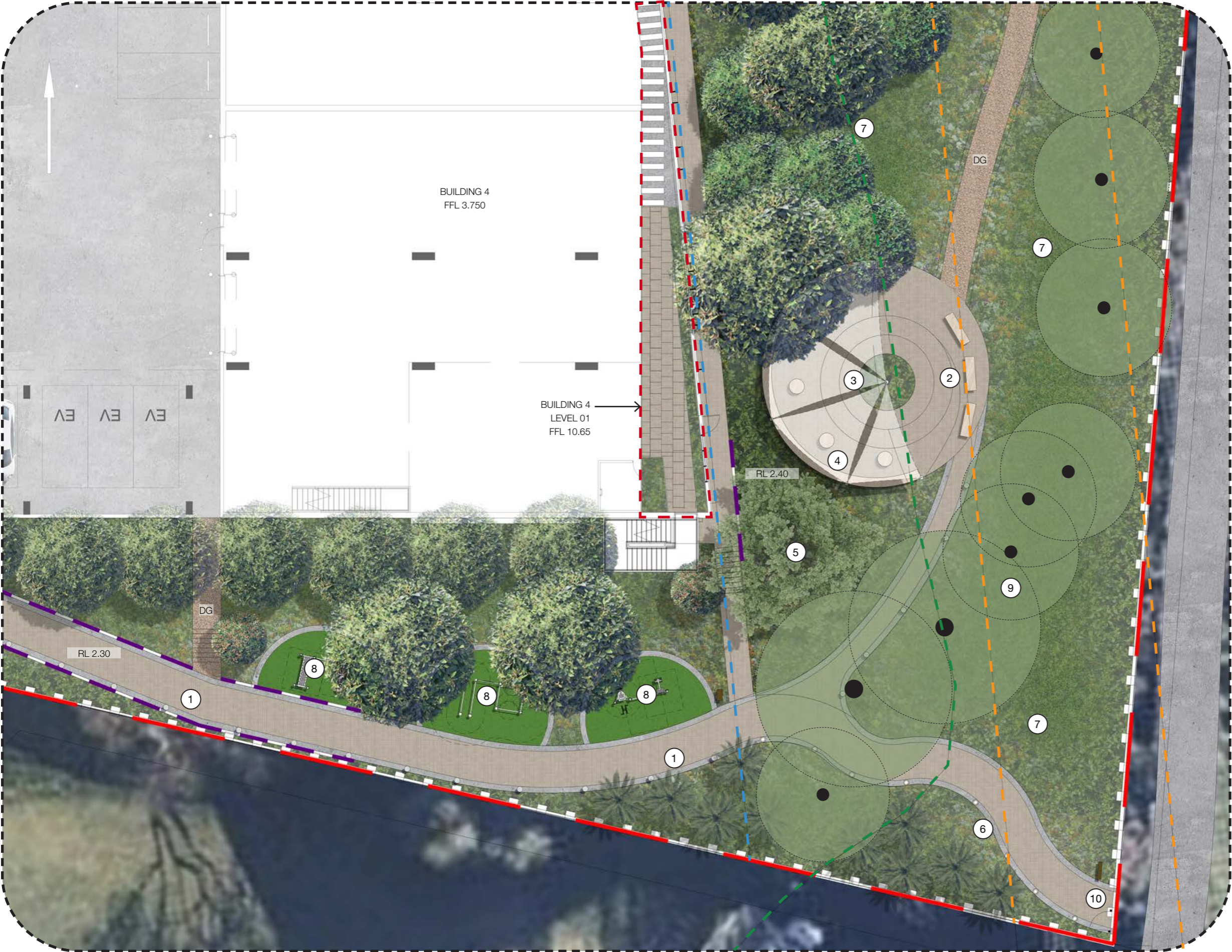
- KEYPLAN**
- KEY**
- SITE BOUNDARY
 - EXISTING OVERHEAD POWER CABLE EASEMENT
 - RW RETAINING WALL TO ENGINEER'S DETAILS
 - POTENTIAL ART WORK ZONE
 - PROPOSED TREE PLANTING REFER TO PLANT SCHEDULE
 - DG DECOMPOSED GRANITE
 - MASS PLANTING BEDS REFER TO DETAIL AND PLANT SCHEDULE

- DESIGN NOTES**
- PAVED SURFACE
 - CAR PARK SHADE TREES
 - BIKE RACK
 - BOLLARD LIGHT
 - RAIN GARDEN
 - TREES AND PALMS IN SOFT LANDSCAPING
 - POTENTIAL ART WORK ZONE
 - PYLON SIGN

LANDSCAPE DETAIL PLAN: BUILDING 4-6 COMMON AREA



LANDSCAPE DETAIL PLAN: BUILDING 4 COMMON AREA



KEYPLAN

KEY

SITE BOUNDARY

EXISTING OVERHEAD POWER CABLE EASEMENT

RW RETAINING WALL TO ENGINEER'S DETAILS

FORESHORE LINE

TRANSMISSION EASEMENT

PROPOSED TREE PLANTING REFER TO PLANT SCHEDULE

DG DECOMPOSED GRANITE

MASS PLANTING BEDS REFER TO DETAIL AND PLANT SCHEDULE

PAVEMENT SURFACE TO ENGINEER'S DETAILS

SOFTFALL ZONE

EXISTING TREES TO BE RETAINED (REFER TO ARBORIST REPORT)

- DESIGN NOTES**
1.

BOLLARD LIGHTS
2.

SANDSTONE LOG SEATS
3.

SHADE SAIL
4.

TABLE AND BENCHES
5.

FEATURE TREE
6.

PATH LIGHTING (IN-GROUND)
7.

RIPARIAN PLANTING / VEGETATION
8.

OUTDOOR FITNESS EQUIPMENT ZONE (SOFTFALL UNDER SYNTHETIC GRASS)
9.

EXISTING TREES TO BE RETAINED
10.

GATE TO BIKE PATH

LANDSCAPE DETAIL PLAN: BUILDING 2-3 COMMON AREA



KEYPLAN



KEY

- SITE BOUNDARY
- EXISTING OVERHEAD POWER CABLE EASEMENT
- RW --- RETAINING WALL TO ENGINEER'S DETAILS
- FORESHORE LINE
- TRANSMISSION EASEMENT
- POTENTIAL ARTWORK ZONE
- PROPOSED TREE PLANTING REFER TO PLANT SCHEDULE
- DG DECOMPOSED GRANITE
- MASS PLANTING BEDS REFER TO DETAIL AND PLANT SCHEDULE
- PAVEMENT SURFACE TO ENGINEER'S DETAILS

DESIGN NOTES

- POTENTIAL ARTWORK ZONE
- CAR PARK SHADE TREES
- SANDSTONE LOG SEATS
- SHADE STRUCTURE
- TABLE AND BENCHES
- PATH LIGHTING (IN-GROUND)
- RIPARIAN PLANTING
- GREEN WALL
- BIO-RETENTION FILTER AREA
- PEDESTRIAN CONNECTION TO FORESHORE



LANDSCAPE DETAIL PLAN: BUILDING 3-4 COMMON AREA

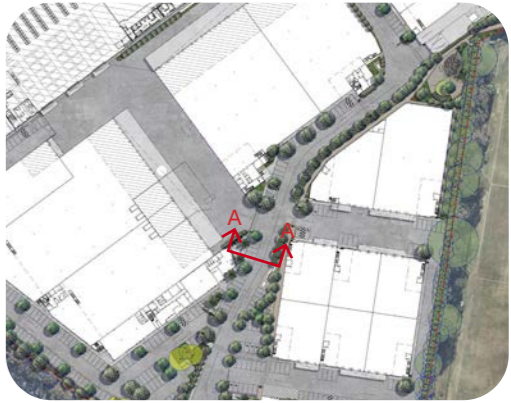


- KEYPLAN**
- KEY**
- SITE BOUNDARY
 - EXISTING OVERHEAD POWER CABLE EASEMENT
 - RW --- RETAINING WALL TO ENGINEER'S DETAILS
 - FORESHORE LINE
 - TRANSMISSION EASEMENT
 - POTENTIAL ARTWORK ZONE
 - PROPOSED TREE PLANTING REFER TO PLANT SCHEDULE
 - DG DECOMPOSED GRANITE
 - MASS PLANTING BEDS REFER TO DETAIL AND PLANT SCHEDULE
 - PAVEMENT SURFACE TO ENGINEER'S DETAILS
 - EXISTING TREES TO BE RETAINED (REFER TO ARBORIST REPORT)

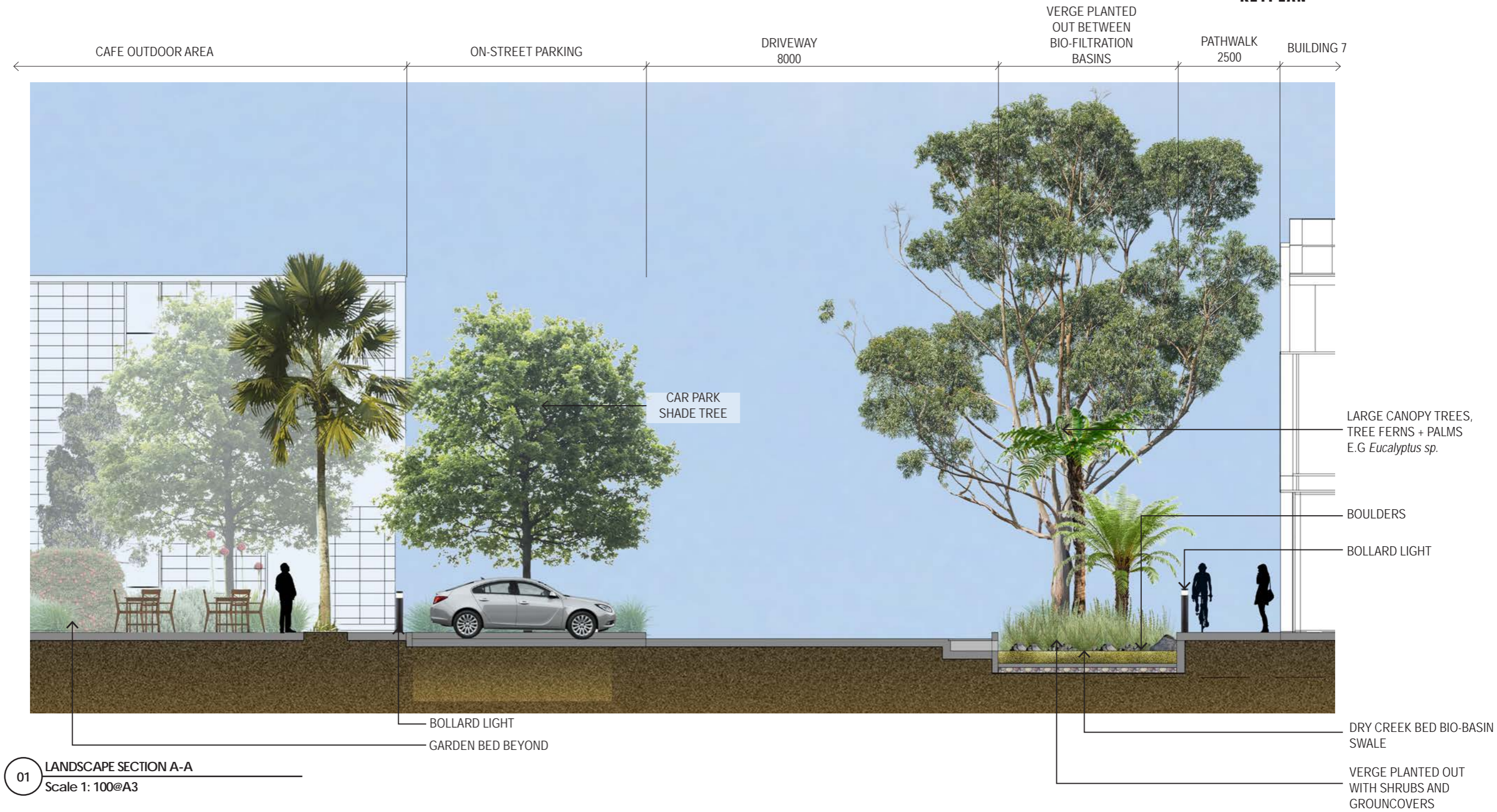
- DESIGN NOTES**
- PAVED SURFACE
 - CAR PARK SHADE TREES
 - SANDSTONE LOG SEATS
 - POTENTIAL ARTWORK ZONE
 - PERGOLA SHADE STRUCTURE
 - TABLE AND BENCHES
 - INTERPRETATIVE SIGNAGE
 - BUSH TUCKER PLANTING
 - INGROUND UPLIGHT
 - RIPARIAN PLANTING / VEGETATION
 - BIO-RETENTION FILTER AREA
 - PEDESTRIAN CONNECTION TO FORESHORE

LANDSCAPE SECTION A-A

Note: landscape sections are indicative only



KEYPLAN

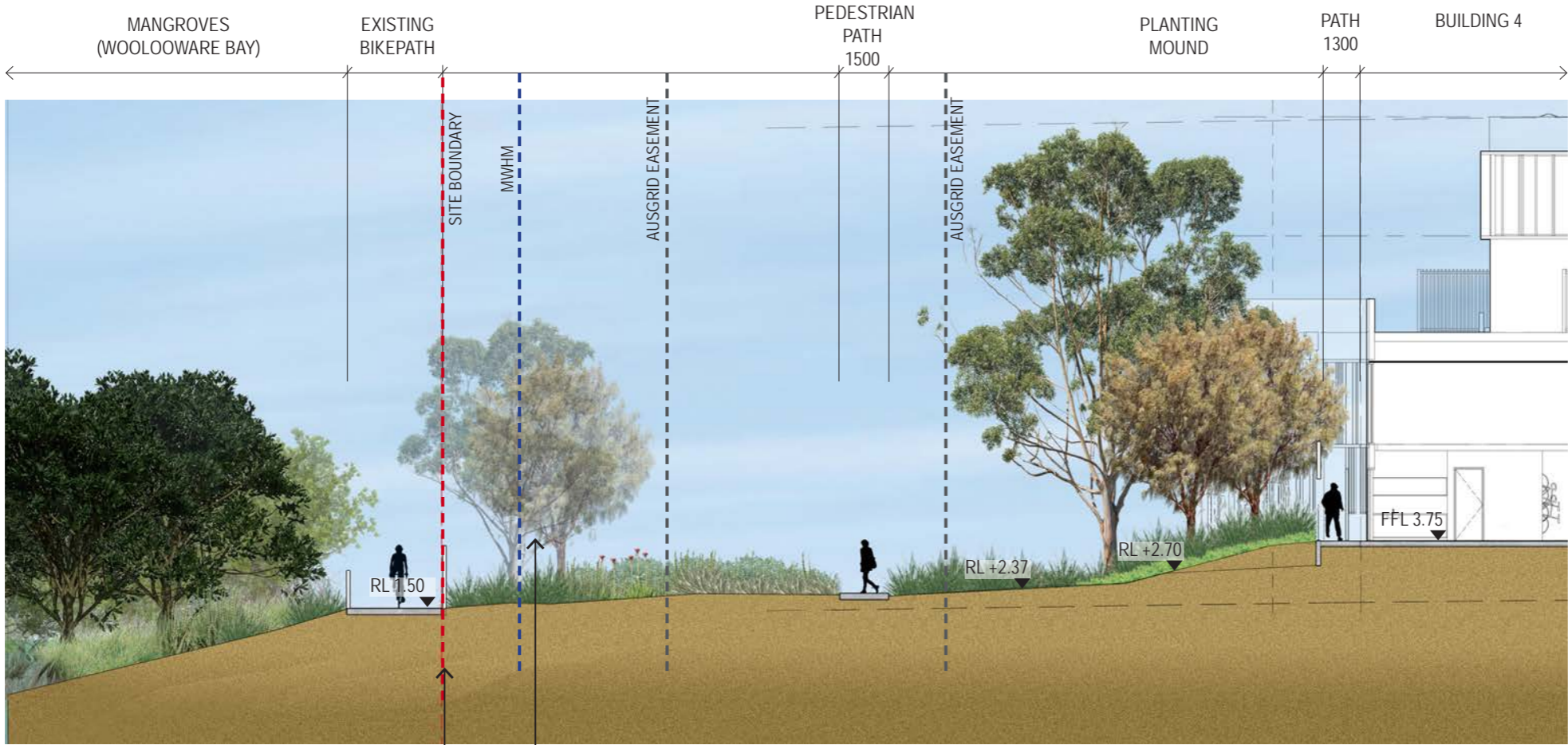


LANDSCAPE SECTION B-B

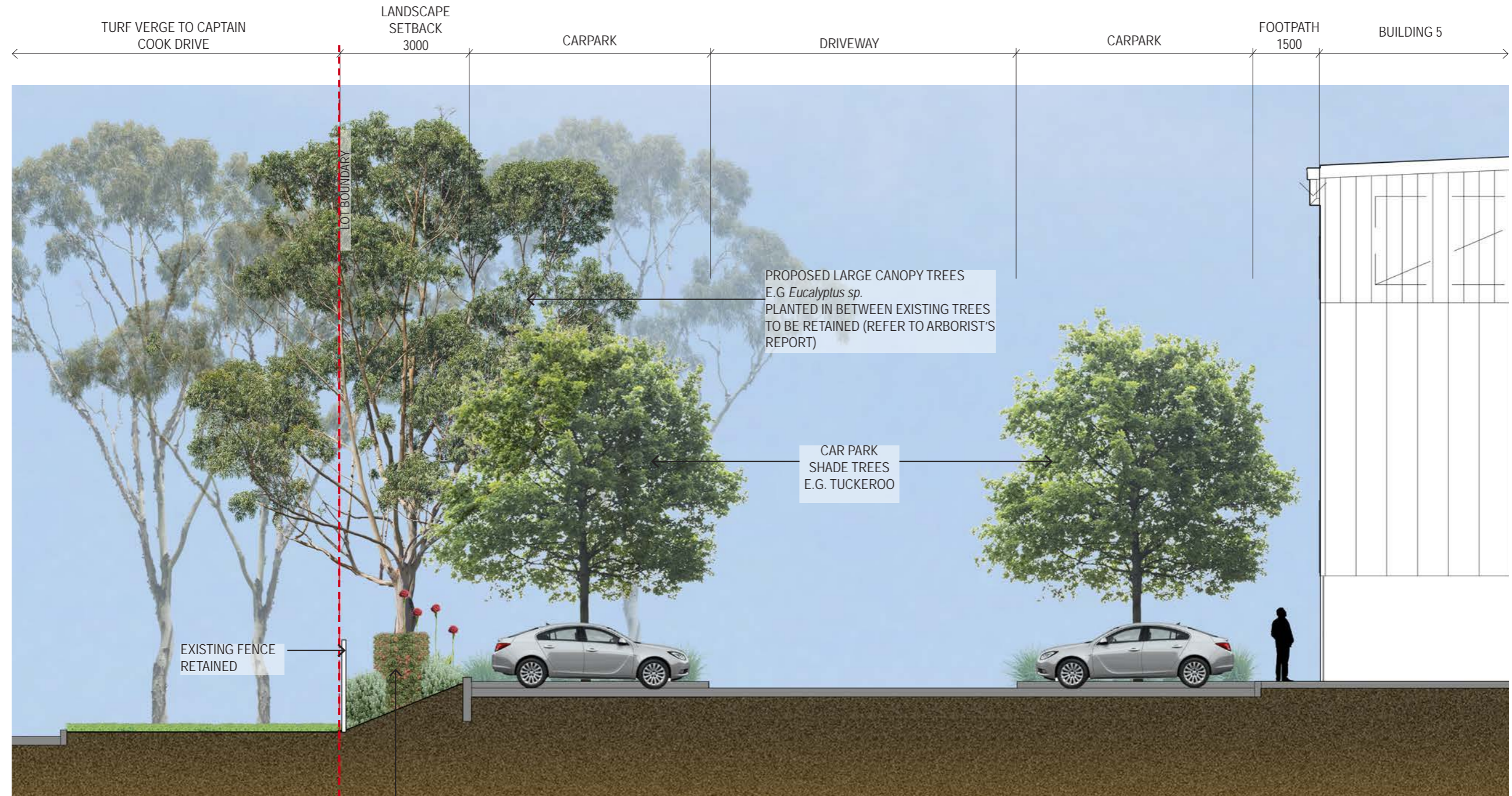
Note: landscape sections are indicative only



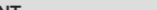
KEYPLAN

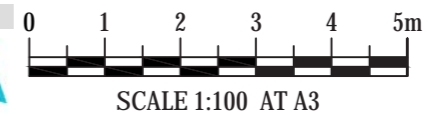


01 LANDSCAPE SECTION B-B
Scale 1: 200@A3



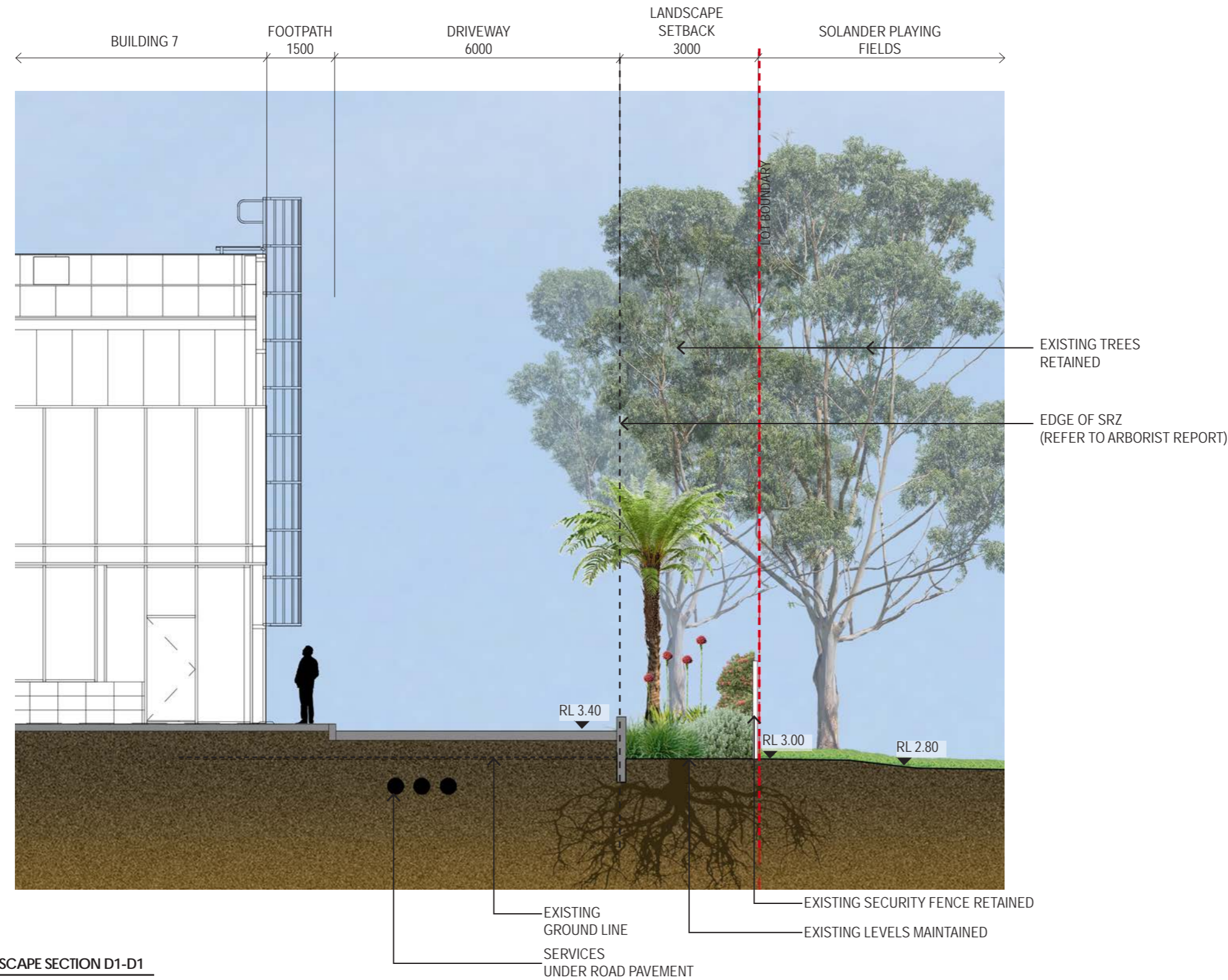
FORMAL HEDGE PLANTING
STYLE RETAINED WITH
NEW PLANTING

PROJECT	DRAWING TITLE	PROJECT NO.	PURPOSE	SCALE	REVISION	DATE	DRAWN	CHECKED	PAGE	CLIENT
TRIPLETWONINE 13 ENDEAVOUR RD, CARINGBAH NSW 2229	LANDSCAPE SECTION C-C	H8-22053	CLIENT REVIEW	1:100@A3	P	13.06.2025	KM/DG/ DF/GP	DV	L23	



LANDSCAPE SECTION D1-D1

Note: landscape sections are indicative only

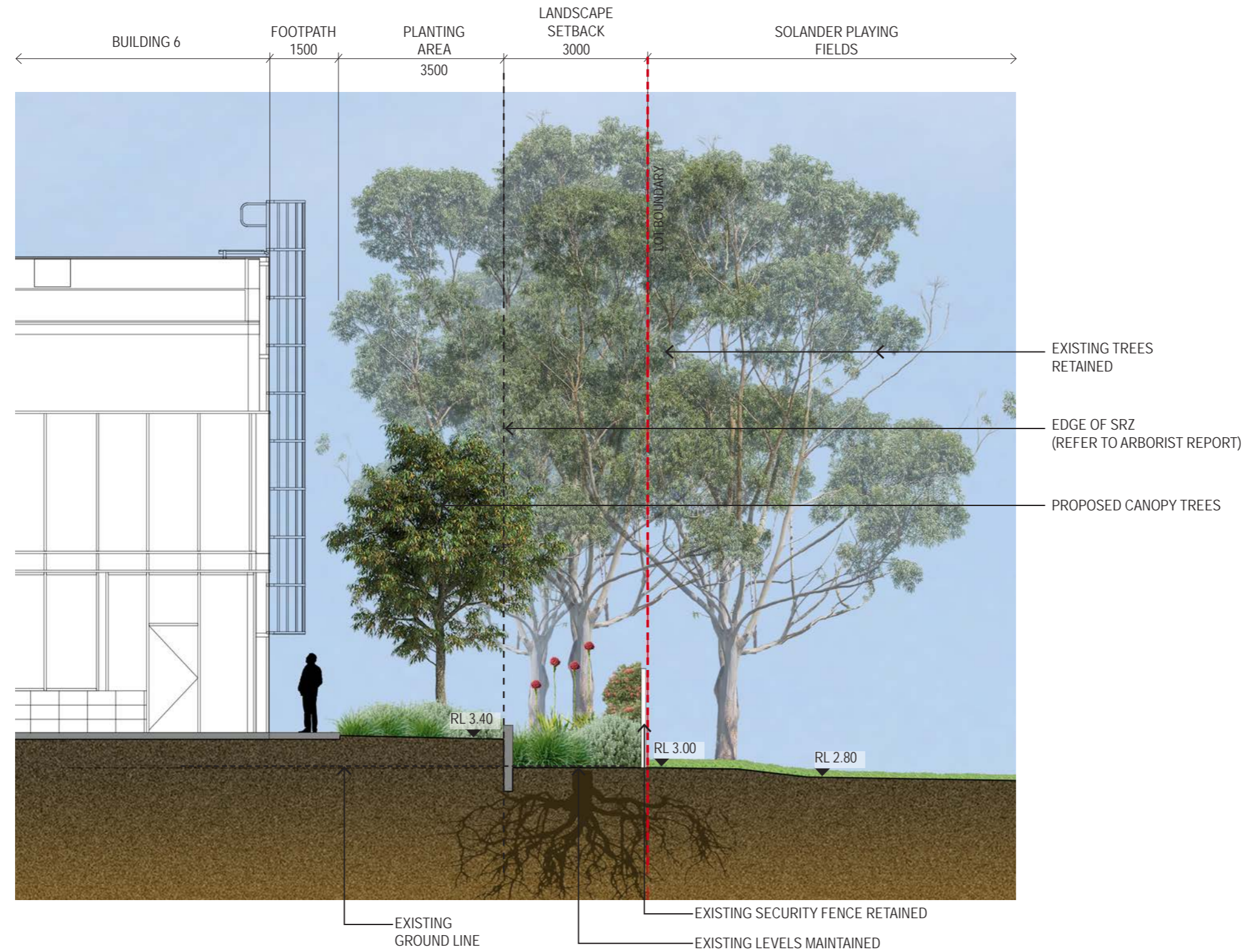


KEYPLAN

01 LANDSCAPE SECTION D1-D1
Scale 1: 100@A3

LANDSCAPE SECTION D2-D2

Note: landscape sections are indicative only

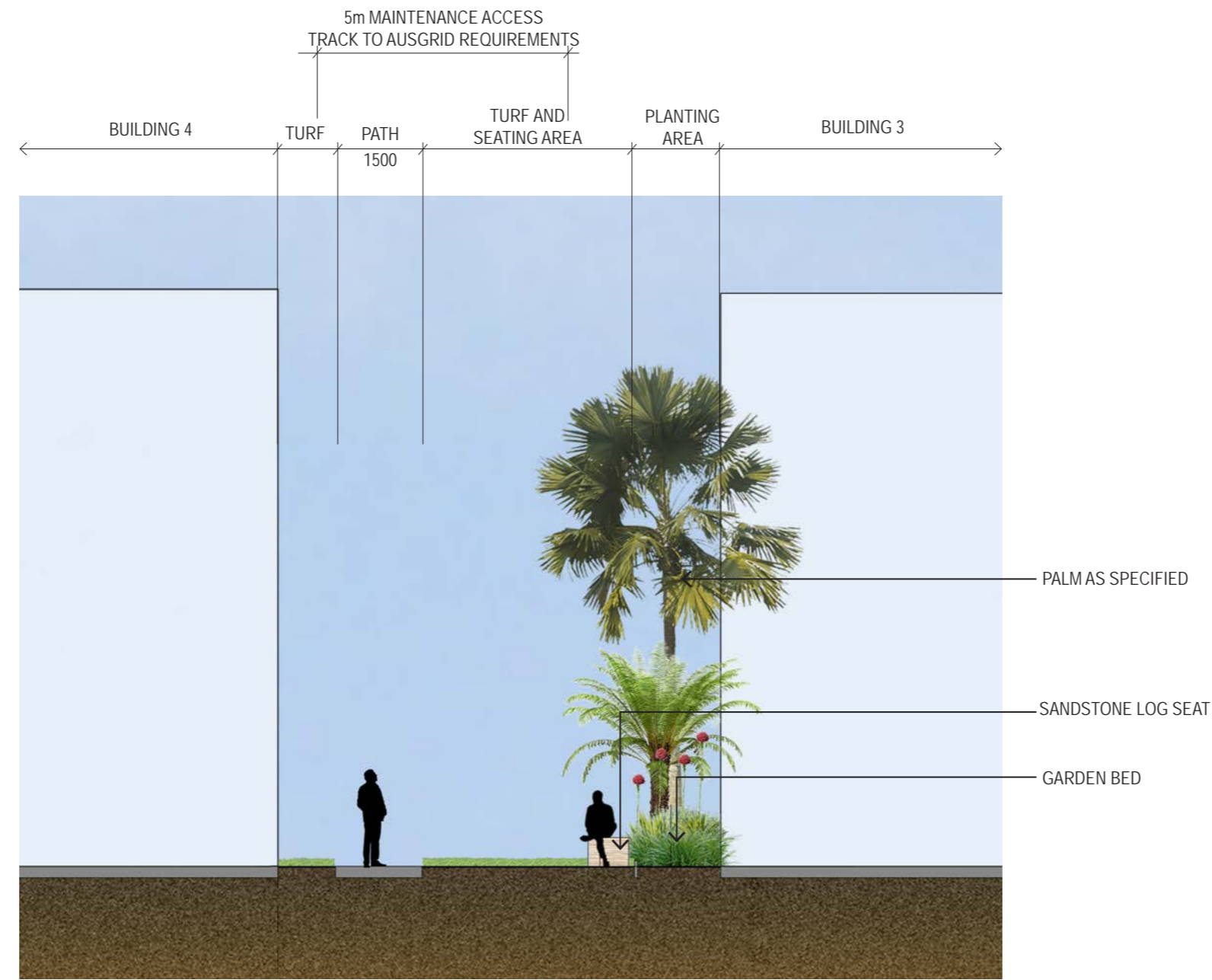


KEYPLAN

01 LANDSCAPE SECTION D2-D2
Scale 1: 100@A3

LANDSCAPE SECTION E-E

Note: landscape sections are indicative only



KEYPLAN

01 LANDSCAPE SECTION F-F
Scale 1: 100@A3

LANDSCAPE SECTION F-F

Note: landscape sections are indicative only



KEYPLAN

BUILDING 6



01 LANDSCAPE SECTION F-F
Scale 1: 100@A3



KEYPLAN





KEYPLAN





KEYPLAN





KEYPLAN



PROPOSED PLANT PALETTE 01

Plant list sourced from Sutherland Shire Council Native Plant Selection

TREES	
BOTANICAL NAME	COMMON NAME
<i>Acacia binervata</i>	Two Veined Hickory
<i>Acacia binervia</i>	Coast Myall
<i>Acacia decurrens</i>	Green Wattle
<i>Acacia implexa</i>	Hickory
<i>Acacia irrorata</i>	Green Wattle
<i>Acacia maidenii</i>	Maiden's Wattle
<i>Acacia parramattensis</i>	Sydney Green Wattle
<i>Acacia parvipinnula</i>	Silver Stem Wattle
<i>Acmena smithii</i>	Lillypilly
<i>Aegiceras corniculatum</i>	River Mangrove
<i>Allocasuarina littoralis</i>	Black Sheoak
<i>Allocasuarina torulosa</i>	Forest Oak
<i>Alphitonia excelsa</i>	Red Ash
<i>Angophora bakeri</i>	Narrow Leaf Apple
<i>Angophora costata</i>	Smooth Barked Apple
<i>Angophora floribunda</i>	Rough Barked Apple
<i>Archontophoenix cunninghamiana</i>	Bangalow Palm
<i>Banksia integrifolia</i>	Coast Banksia
<i>Banksia serrata</i>	Old Man Banksia
<i>Callicoma serratifolia</i>	Black Wattle
<i>Cassine australis</i>	Red Fruited Olive Plum
<i>Casuarina glauca</i>	Swamp Sheoak
<i>Celtis paniculata</i>	Hackberry
<i>Ceratopetalum apetalum</i>	Coachwood
<i>Corymbia gummifera</i>	Bloodwood
<i>Cupaniopsis anacardioides</i>	Tuckeroo
<i>Ehretia acuminata</i>	Koda
<i>Elaeocarpus reticulatus</i>	Blueberry Ash
<i>Endiandra sieberi</i>	Corkwood
<i>Eucalyptus agglomerata</i>	Blue Leaf Stringy Bark
<i>Eucalyptus amplifolia</i>	Cabbage Gum
<i>Eucalyptus botryoides</i>	Bangalay
<i>Eucalyptus botryoides X saligna</i>	Blue Gum Hybrid
<i>Eucalyptus capitellata</i>	Brown Stringybark
<i>Eucalyptus consideriana</i>	Yertchuk

TREES	
BOTANICAL NAME	COMMON NAME
<i>Eucalyptus eugenioides</i>	Thin Leaf Stringybark
<i>Eucalyptus fibrosa</i>	Broadleaf Ironbark
<i>Eucalyptus globoidea</i>	White Stringybark
<i>Eucalyptus haemastoma</i>	Scribbly Gum
<i>Eucalyptus longifolia</i>	Woollybutt
<i>Eucalyptus luehmanna</i>	Yellow Top Ash
<i>Eucalyptus multicaulis</i>	Whip Stick Mallee
<i>Eucalyptus oblonga</i>	Sandstone Stringybark
<i>Eucalyptus obstans</i>	Port Jackson Mallee
<i>Eucalyptus paniculata</i>	Grey Ironbark
<i>Eucalyptus pilularis</i>	Blackbutt
<i>Eucalyptus piperita</i>	Sydney Peppermint
<i>Eucalyptus punctata</i>	Grey Gum
<i>Eucalyptus racemosa</i>	Narrow Leaf Scribbly Gum
<i>Eucalyptus resinifera</i>	Red Mahogany
<i>Eucalyptus robusta</i>	Swamp Mahogany
<i>Eucalyptus saligna</i>	Sydney Blue Gum
<i>Eucalyptus sieberi</i>	Silver top Ash
<i>Eucalyptus squamosa</i>	Scaly Bark
<i>Eucalyptus tereticornis</i>	Forest Red Gum
<i>Euroschinus falcata</i>	Ribbonwood
<i>Ficus coronata</i>	Sandpaper Fig
<i>Ficus rubiginosa</i>	Rusty Fig
<i>Ficus superba</i> var. <i>henneana</i>	Deciduous Fig
<i>Glochidion ferdinandi</i>	Cheese Tree
<i>Gmelina leichhardtii</i>	White Beech
<i>Guioa semiglauca</i>	Guioa
<i>Hymenosporum flavum</i>	Native Frangipani
<i>Leptospermum laevigatum</i>	Coastal Tea Tree
<i>Livistona australis</i>	Cabbage Palm
<i>Macadamia tetraphylla</i>	Macadamia Nut
<i>Melaleuca bracteata</i> + cultivars	Melaleuca
<i>Melaleuca decora</i>	White Feather Honeymyrtle
<i>Melaleuca linariifolia</i>	Snow in Summer
<i>Melaleuca quinquenervia</i>	Broad Leaf Paperbark
<i>Melaleuca styphelioides</i>	Prickly Tea Tree
<i>Planchonella australis</i>	Black Plum

TREES	
BOTANICAL NAME	COMMON NAME
<i>Polyscias elegans</i>	Celerywood
<i>Sarcomelicope simplicifolia</i>	Yellow Wood
<i>Schizomeria ovata</i>	Crab Apple
<i>Streblus brunonianus</i>	Whalebone Tree
<i>Syncarpia glomulifera</i>	Turpentine
<i>Syzygium australe</i>	Brush Cherry
<i>Syzygium oleosum</i>	Blue Lilli Pilli
<i>Syzygium paniculatum</i>	Magenta Lilli Pilli
<i>Toona ciliata</i>	Red Cedar
<i>Tristaniopsis laurina</i>	Water Gum

SHRUBS	
BOTANICAL NAME	COMMON NAME
<i>Acacia elongata</i>	Swamp Wattle
<i>Acacia falcata</i>	Sickle Wattle
<i>Acacia floribunda</i>	Sally Wattle
<i>Acacia linifolia</i>	Flax Leaf Wattle
<i>Acacia longifolia</i>	Sydney Golden Wattle
<i>Allocasuarina distyla</i>	Scrub Sheoak
<i>Angophora hispida</i>	Dwarf Apple
<i>Aotus ericoides</i>	Common Aotus
<i>Backhousia myrtifolia</i>	Grey Myrtle
<i>Baeckea linifolia</i>	Swamp Baeckea
<i>Banksia ericifolia</i>	Heath Leaf Banksia
<i>Banksia marginata</i>	Silver Banksia
<i>Banksia oblongifolia</i>	Banksia
<i>Banksia robur</i>	Swamp Banksia
<i>Banksia spinulosa</i>	Hairpin Banksia
<i>Bauera rubiodes</i>	Dog Rose
<i>Bertya brownii</i>	Bertya
<i>Bertya pomaderroides</i>	Hazel Bertya
<i>Breynia oblongifolia</i>	Breynia
<i>Bursaria spinosa</i>	Blackthorn
<i>Callistemon (Candy Pink)</i>	Bottlebrush
<i>Callistemon (Captain Cook)</i>	
<i>Callistemon (Endeavour)</i>	
<i>Callistemon (Eureka)</i>	
<i>Callistemon (Hannah Ray)</i>	Hannah Ray Bottlebrush

PROPOSED PLANT PALETTE 02

Plant list sourced from Sutherland Shire Council Native Plant Selection

SHRUBS		SHRUBS		NATIVE PLANT SPECIES		NATIVE PLANT SPECIES	
BOTANICAL NAME	COMMON NAME	BOTANICAL NAME	COMMON NAME	BOTANICAL NAME	COMMON NAME	BOTANICAL NAME	COMMON NAME
<i>Callistemon 'Kings Pk Special'</i>		<i>Leptospermum grandifolium</i>	Woolly Tea Tree	<i>Tristania neriifolia</i>	Water Gum	<i>Dampiera purpurea</i>	Dampiera
<i>Callistemon 'Western Glory'</i>		<i>Leptospermum juniperinum</i>	Tea Tree	<i>Viminaria juncea</i>	Native Broom	<i>Dampiera stricta</i>	Blue Dampiera
<i>Callistemon citrinus</i>	Crimson Bottlebrush	<i>Leptospermum polygalifolium</i>	Lemon Scented Tea Tree	<i>Westringia (Blue Heaven)</i>		<i>Darwinia diminuta</i>	Darwinia
<i>Callistemon citrinus</i>	White Anzac	<i>Logania albiflora</i>	Logania	<i>Westringia fruticosa</i>	Coast Rosemary	<i>Daviesia ulicifolia</i>	Gorse Bitter-pea
<i>Callitris muelleri</i>	Mueller's Cypress	<i>Lomatia myricoides</i>	River Lomatia	<i>Westringia glabra</i>		<i>Dillwynia floribunda</i>	Eggs and Bacon
<i>Callitris rhomboidea</i>	Port Jackson Pine	<i>Melaleuca deanei</i>	Deane's Honeymyrtle	<i>Xylomelum pyriforme</i>	Woody Pear	<i>Dillwynia parvifolia</i>	Small Leaf Dillwynia
<i>Calytrix tetragona</i>	Fringe Myrtle	<i>Melaleuca nodosa</i>	Ball Honeymyrtle	<i>Zieria smithii</i>	Sandfly Zieria	<i>Einadia hastata</i>	Saloop
<i>Cassinia aureonitens</i>	Golden Cassinia	<i>Melaleuca squamea</i>	Swamp Honeymyrtle	<i>Acacia brownei</i>	Prickly Moses	<i>Epacris longiflora</i>	Fuchsia Heath
<i>Cassinia uncata</i>	Bent Cassinia	<i>Melaleuca squarrosa</i>	Scented Paperbark	<i>Acacia hispidula</i>	Rough Hairy Wattle	<i>Hibbertia bracteata</i>	Guinea Flower
<i>Ceratopetalum gummiferum</i>	NSW Christmas Bush	<i>Myoporum acuminatum</i>	Mangrove Boobialla	<i>Acacia ulicifolia</i>	Prickly Moses	<i>Hibbertia linearis</i>	Showy Guinea Flower
<i>Clerodendrum tomentosum</i>	Hairy Clerodendrum	<i>Olearia microphylla</i>	Small Leaf Daisy Bush	<i>Actinotus helianthi</i>	Flannel Flower	<i>Hibbertia nitida</i>	Shining Guinea Flower
<i>Daviesia corymbosa</i>	Bitter Pea	<i>Olearia tomentosa</i>	Hairy Olearia	<i>Actinotus minor</i>	Lesser Flannel Flower	<i>Hibbertia obtusifolia</i>	Grey Guinea Flower
<i>Daviesia mimosoides</i>	Bitter Pea	<i>Omalthus populifolius</i>	Bleeding Heart	<i>Allocasuarina diminuta ssp. diminuta</i>	Sheoak	<i>Hovea linearis</i>	Hovea
<i>Dillwynia retorta</i>	Eggs and Bacon	<i>Ozothamnus diosmifolius</i>	Everlasting Paper Daisy	<i>Allocasuarina nana</i>	Dwarf Sheoak	<i>Hypericum gramineum</i>	Small St.John's Wort
<i>Dodonaea triquetra</i>	Hop Bush	<i>Persoonia pinifolia</i>	Pine Leaf Geebung	<i>Austromyrtis dulcis</i>	Midyin Berry	<i>Isopogon anemonifolius</i>	Drumsticks
<i>Eriostemon australasius</i>	Pink Wax Flower	<i>Petrophile pulchella</i>	Cone Stick	<i>Austromyrtus tenuifolia</i>	Narrow Leaf Myrtle	<i>Lasiopetalum ferrugineum</i>	Rusty Petals
<i>Eupomatia laurina</i>	Native Guava	<i>Petrophile sessilis</i>	Cone Stick	<i>Baeckea imbricata</i>	Heath Myrtle	<i>Leptospermum arachnoides</i>	Spidery Tea Tree
<i>Gompholobium grandiflorum</i>	Wedge Pea	<i>Phebalium dentatum</i>	Phebalium	<i>Baeckea virgata (Nana)</i>	Dwarf Swamp Myrtle	<i>Leptospermum polygalifolia</i>	Pacific Beauty
<i>Gompholobium latifolium</i>	Broad Leaf Wedge Pea	<i>Phebalium squamulosum</i>	Phebalium	<i>Bauera microphylla</i>	White River Rose	<i>Lobelia dentata</i>	Native Lobelia
<i>Grevillea buxifolia</i>	Grey Spider Flower	<i>Philotheca myoporoides</i>	Long Leaf Wax Flower	<i>Boronia floribunda</i>	Pale Pink Boronia	<i>Lomatia silaifolia</i>	Wild Parsley
<i>Grevillea linearifolia</i>	Narrow Leaf Grevillea	<i>Pittosporum revolutum</i>	Hairy Pittosporum	<i>Boronia ledifolia</i>	Sydney Boronia	<i>Mirbelia rubifolia</i>	Mirbelia
<i>Grevillea longifolia</i>	Long Leaf Grevillea	<i>Platylobium formosum</i>	Handsome Flat Pea	<i>Boronia serrulata</i>	Native Rose	<i>Persicaria lapathifolia</i>	Pale Knot Weed
<i>Grevillea mucronulata</i>	Green Grevillea	<i>Polyscias sambucifolia</i>	Elderberry Panax	<i>Bossiaea ensata</i>	Small leafless Bossiaea	<i>Phyllanthus hirtellus</i>	Thyme Spurge
<i>Grevillea oleoides</i>	Red Spider Flower	<i>Pomaderris andromedifolia</i>	Pomaderris	<i>Bossiaea heterophylla</i>	Variable Bossiaea	<i>Platysace ericoides</i>	Healthy Platysace
<i>Grevillea sericea</i>	Pink Spider Flower	<i>Pomaderris discolor</i>	Pomaderris	<i>Bossiaea scolopendria</i>	Egg and Bacon	<i>Platysace linearifolia</i>	Carrot Tops
<i>Grevillea banksii</i>		<i>Pomaderris ferruginea</i>	Rusty Pomaderris	<i>Bossiaea stephensoni</i>	Bossiaea	<i>Pomax umbellata</i>	Pomax
<i>Grevillea 'Poorinda Constance'</i>		<i>Pomaderris intermedia</i>	Pomaderris	<i>Brachycome multifida</i>	Swan River Daisy	<i>Pseudanthus pimeleoides</i>	Pseudanthus
<i>Grevillea 'Robyn Gordon'</i>		<i>Prostanthera linearis</i>	Narrow Leaf Mint Bush	<i>Callistemon citrinus</i>	Crimson Bottlebrush	<i>Pultenaea tuberculata</i>	Bush Pea
<i>Hakea dactyloides</i>	Broad Leaf Hakea	<i>Prostanthera sieberi</i>	Mint Bush	<i>Callistemon citrinus</i>	White Anzac	<i>Rhagodia candolleana</i>	Seaberry Saltbush
<i>Hakea gibbosa</i>	Needlebush	<i>Pultenaea blakelyi</i>	Blakely's Bush Pea	<i>Callistemon subulatus</i>	Dwarf Bottlebrush	<i>Senecio hispidulus</i>	Rough Groundsel
<i>Hakea propinqua</i>	Needlebush	<i>Pultenaea daphnoides</i>	Large Leaf Bush Pea	<i>Chloanthes stoechadis</i>	Common Stoechadis	<i>Senecio lautus</i>	Coastal Groundsel
<i>Hakea salicifolia</i>	Willow Leaf Hakea	<i>Rhodamnia rubescens</i>	Scrub Turpentine	<i>Comesperma ericinum</i>	Pink Matchheads	<i>Tetratheca neglecta</i>	Black Eyed Susan
<i>Hakea sericea</i>	Bushy Needlebush	<i>Ricinocarpus pinifolius</i>	Wedding Bush	<i>Correa alba</i>	Coast Correa	<i>Wahlenbergia communis</i>	Blue Bells
<i>Hemigenia purpurea</i>	Common Hemigenia	<i>Rulingia dasyphylla</i>	Kerrawang	<i>Correa baeuerlenii</i>	Chefs Cap Correa	<i>Xanthosia pilosa</i>	Hairy Xanthosia
<i>Hibbertia riparia</i>	Erect Guinea Flower	<i>Stenocarpus salignus</i>	Scrub Beefwood	<i>Correa decumbens</i>	Correa	<i>Xanthosia tridentata</i>	Rock Xanthosia
<i>Indigophora australis</i>	Native Indigo	<i>Synoum glandulosum</i>	Bastard Rosewood	<i>Correa reflexa</i>	Native Fuchsia	<i>Zieria laevigata</i>	Smooth Zieria
<i>Kunzea ambigua</i>	Tick Bush	<i>Tasmannia insipida</i>	Pepper Bush	<i>Crowea exalata</i>	Crowea	<i>Zieria pilosa</i>	Hairy Zieria
<i>Kunzea capitata</i>	Pink Kunzea	<i>Telopea speciosissima</i>	NSW Waratah				
<i>Lambertia formosa</i>	Mountain Devil	<i>Trema tomentosa</i>	Native Peach				
<i>Leptospermum continentale</i>	Prickly Tea Tree						

PROPOSED PLANT PALETTE 03

Plant list sourced from Sutherland Shire Council Native Plant Selection

GRASSES & GROUNDCOVERS	
BOTANICAL NAME	COMMON NAME
<i>Astroloma humifusum</i>	Craneberry Heath
<i>Banksia integrifolia (Prostrate)</i>	Groundcover Banksia
<i>Billardiera scandens</i>	Appleberry
<i>Carpobrotus glaucescens</i>	Native Pig Face
<i>Centella asiatica</i>	Swamp Pennywort
<i>Cissus antarctica</i>	Kangaroo Grape
<i>Darwinia grandiflora</i>	Darwinia
<i>Dichondra repens</i>	Kidney Weed
<i>Geranium homeanum</i>	Northern Cranesbill
<i>Grevillea (Gaudichaudii)</i>	
<i>Grevillea (Royal Mantle)</i>	
<i>Hardenbergia violacea</i>	False Sarsaparilla
<i>Hibbertia scandens</i>	Snake Vine
<i>Ipomoea brasiliensis</i>	Goatsfoot Convolvulus
<i>Kennedia prostrata</i>	Running Postman
<i>Podocarpus spinulosus</i>	Plum Pine
<i>Polymeria calycina</i>	Swamp Bind Weed
<i>Rubus hillii</i>	Broad Leaf Bramble
<i>Rubus parvifolius</i>	Native Raspberry
<i>Samolus repens</i>	Creeping Brookweed
<i>Scaevola aemula</i>	Fan Flower
<i>Scaevola albida</i>	White Fan Flower
<i>Scaevola calendulacea</i>	Dune Fan Flower
<i>Tetragonia tetragonoides</i>	Warrigal Cabbage
<i>Viola hederacea</i>	Native Violet
<i>Anisopogon avenaceus</i>	Oat Spear Grass
<i>Aristida vagans</i>	Three Awned Spear Grass
<i>Baumea articulata</i>	Jointed Twig Rush
<i>Baumea rubiginosa</i>	Soft Twig Rush
<i>Carex appressa</i>	Tall Sedge
<i>Crinum pedunculatum</i>	Crinum Lily
<i>Dianella caerulea</i>	Blue Flax Lily
<i>Dianella revoluta</i>	Mauve Flax Lily
<i>Doryanthes excelsa</i>	Gymea Lily
<i>Gahnia sieberiana</i>	Sword Sedge
<i>Imperata cylindrica</i>	Blady Grass
<i>Isolepis nodosus</i>	Knobby Club Rush
<i>Juncus usitatus</i>	Common Rush
<i>Lomandra longifolia</i>	Spiny Mat Rush

SELECT PLANT IMAGES



Eucalyptus crebra



Magnolia "Coolwyn Gloss"



Elaeocarpus reticulatus



Cupaniopsis anacardioides



Eucalyptus amplifolia



Waterhousea floribunda



Glochidon ferdinandi



Melaleuca linariifolia



Syncarpia glomulifera



Melaleuca styphelioides



Tristaniopsis laurina



Banksia serrata



Callistemon sp.

<i>Lomandra multiflora</i>	Lomandra
<i>Paspalum distichum</i>	Water Couch
<i>Phragmites australis</i>	Common Reed
<i>Juncus krausii</i>	Sea Rush
<i>Gahnia aspera</i>	Sword Sedge
<i>Gahnia clarkei</i>	Sword Sedge
<i>Themeda australis</i>	Kangaroo Grass
<i>Typha orientalis</i>	Bull Rush
<i>Xanthorrhoea arborea</i>	Grass Tree
<i>Xanthorrhoea media</i>	Grass Tree
<i>Pandorea pandorana</i>	Wonga Vine
<i>Clematis aristata</i>	Old Man's Beard

PROPOSED PLANT PALETTE 04

Plant list sourced from Sutherland Shire Council Native Plant Selection

FORESHORE PLANTING	
BOTANICAL NAME	COMMON NAME
TREES	
<i>Acacia longifolia</i> var <i>sophorae</i>	Coastal Wattle
<i>Allocasuarina littoralis</i>	Black She-Oak
<i>Causarina glauca</i>	Swamp She-Oak
<i>Eucalyptus botryoides</i>	Southern mahogany
<i>Eucalyptus robusta</i>	Swamp Mahogany
<i>Acmena smithii</i>	Lilly Pilly
<i>Banksia integrifolia</i>	Coast Banksia
<i>Glochidion ferdinandi</i>	Cheese Tree
<i>Alectryon subcinereus</i>	Native quince
SHRUBS	
<i>Melaleuca nodosa</i>	Prickly-Leaved Paperbark
<i>Viminaria juncea</i>	Native Broom
<i>Acacia terminalis</i> subsp <i>angustifolia</i>	Sunshine Wattle
<i>Banksia serrata</i>	Old Man Banksia
<i>Callistemon citrinus</i>	Scarlet Bottlebrush
<i>Kunzea ambigua</i>	White Kunzea
<i>Leptospermum laevigatum</i>	Coast Tea Tree
<i>Westringia fruticosa</i>	Coastal Rosemary
<i>Breynia oblongifolia</i>	Coffee bush
<i>Correa alba</i>	Coastal Correa
<i>Correa reflexa</i>	Natve fuschia
<i>Leucopogon parviflorus</i>	Coastal beard heath
<i>Myoporum acuminatum</i>	Boobialla

BUSH TUCKER PLANTING	
BOTANICAL NAME	COMMON NAME
SHRUBS AND GROUNDCOVERS	
<i>Austromyrtis dulcis</i>	Midyin Berry
<i>Syzygium ‘Southern Form’</i>	Lilly Pilly
<i>Dianella revoluta</i>	Mauve Flax Lily
<i>Carpobrotus glaucescens</i>	Pigface
<i>Tetragonia tetragonoides</i>	New zealand spinach

FORESHORE PLANTING	
BOTANICAL NAME	COMMON NAME
UNDERSTOREY	
<i>Cissus hypoglauca</i>	Australian vine
<i>Dianella caerulea</i>	Blue flax-lily
<i>Dichondra repens</i>	Kidney weed
<i>Imperata cylindrica</i> var. <i>Major</i>	Blady grass
<i>Hibbertia scandens</i>	Snake vine
<i>Juncus krausii</i>	Salt marsh rush
<i>Juncus usitatus</i>	Common rush
<i>Kennedia rubicunda</i>	Dusky coral pea
<i>Lomandra longifolia</i>	Spiny-head mat-rush
<i>Oplismenus aemulus</i>	Basketgrass
<i>Sporobolus virginicus</i>	Seashore dropseed
<i>Tetragonia tetragonoides</i>	New zealand spinach
<i>Carpobratus glaucescens</i>	Pigface
<i>Cissus hypoglauca</i>	Five-leaf water
<i>Dichelachne crinita</i>	Longhair plume grass
<i>Hardenbergia violacea</i>	False sarsaparilla
<i>Hibbertia scandens</i>	Guinea flower
<i>Pratia purpurascens</i>	White root
<i>Scaevola calendulacea</i>	Dune fan-flower
<i>Poa labillardierei</i>	Tussock-grass
<i>Carex pumila</i>	Dwarf sedge
<i>Lampranthus tegens</i>	
<i>Scaveola albida</i>	
<i>Spinifex sericea</i>	Spinifex
<i>Stephanica japonica</i> var <i>discolor</i>	Snake vine
<i>Suaeda australis</i>	Austral seablite
<i>Ficinia nodosa</i>	Knotted club-rush
<i>Juncus krausaii</i>	Salt marsh rush
<i>Sporobolus virginicus</i>	Seashore dropseed

FEATURE PLANTING	
BOTANICAL NAME	COMMON NAME
TREES	
<i>Elaeocarpus eumundi</i>	Eumundi quandong
<i>Banksia integrifolia</i>	Coast Banksia
<i>Cupaniopsis anacardioides</i>	Tuckeroo
<i>Cyathea australis</i>	Tree Fern
<i>Livistona australis</i>	Cabbage Palm
<i>Magnolia ‘Coolwyn Gloss’</i>	Pleached Magnolia
<i>Elaeocarpus reticulatus</i>	Blueberry ash
<i>Waterhousea floribunda</i>	Weeping Lilly Pilly
<i>Tristaniopsis laurina</i>	Water Gum
<i>Magnolia grandiflora ‘Exmouth’</i>	Southern Magnolia
SHRUBS	
<i>Agave attenuata</i>	Fox tail Agave
<i>Aspidistra elatior</i>	Cast Iron Plant
<i>Bromeliad ‘Silver Plum’</i>	Giant bromeliad
<i>Callistemon ‘Little John’</i>	Bottlebrush
<i>Doryanthes excelsa</i>	Gymea Lily
<i>Metrodiseros thomasii</i>	NZ Christmas Bush
<i>Syzygium ‘Southern Form’</i>	Lilly Pilly
<i>Philodendron xanadu</i>	Xanadu
<i>Westringia fruticosa</i>	Coastal Rosemary
<i>Gardenia augusta ‘Florida’</i>	Gardenia
GRASSES AND GROUNDCOVER	
<i>Liriope ‘ Evergreen Giant’</i>	Evergreen Giant
<i>Trachelospermum jasminoides</i>	Jasmine
<i>Dichondra ‘Silver Falls’</i>	Silver Falls
<i>Ficus pumila</i>	Climbing Fig
SUCCULENTS	
<i>Carpobrotus glaucescens</i>	Pigface
<i>Senecio serpens</i>	Blue Chalksticks

SELECT PLANT IMAGES

TREES



Elaeocarpus eumundi



Banksia integrifolia



Cupaniopsis anacardioides



Cyathea australis

SHRUBS



Agave attenuata



Aspidistra elatior



Bromeliad ‘Silver Plum’



Callistemon ‘Little John’

GRASSES, GROUNDCOVER & SUCCULENTS



Carpobrotus glaucescens



Senecio serpens



Liriope ‘ Evergreen Giant’



Trachelospermum jasminoides

PROJECT	DRAWING TITLE	PROJECT NO.	PURPOSE	SCALE	REVISION	DATE	DRAWN	CHECKED	PAGE	CLIENT
---------	---------------	-------------	---------	-------	----------	------	-------	---------	------	--------

TRIPLETWONINE
13 ENDEAVOUR RD, CARINGBAH NSW
2229

PROPOSED PLANT PALETTE 04

H8-22053

CLIENT REVIEW

NTS

P

13.06.2025

KM/DG/
DF/GP

DV

L35

Aliro

TYPICAL SPECIFICATION + MAINTENANCE NOTES

SPECIFICATION NOTES

SERVICES

Before landscape work is commenced the Landscape Contractor is to establish the position of all service lines and ensure tree planting is carried out at least 3 metres away from these services. Service lids, vents and hydrants shall be left exposed and not covered by any landscape finishes (turfing, paving, garden beds etc.) Finish adjoining surfaces flush with pit lids.

PLANTING MIXTURE - (300mm DEPTH)

Imported Garden Mix.
Type: Premium
Available: Australian Native Landscapes (ANL)

TURF SOIL MIX (150mm DEPTH)

Type: Turf underlay
Available: Australian Native Landscapes (ANL)

MULCH

APPLICATION: Place mulch to the required depth, (refer to drawings) clear of plant stems, and rake to an even surface finishing 25mm below adjoining levels. Ensure mulch is watered in and tamped down during installation.
MULCH TYPE: (75mm DEPTH)
Type 1:
Pine bark: From mature trees, graded in size from 15mm to 30mm, free from wood slivers. Dark brown in colour and texture.

COMPOST

Shall be “GO Compost” as available from Soilco or approved equal.

PLANT MATERIAL

All plants supplied are to conform with those species listed in the Plant Schedule on the drawings. Generally plants shall be vigorous, well established, hardened off, of good form consistent with species or variety, not soft or forced, free from disease or insect pests with large healthy root systems and no evidence of having been restricted or damaged. Trees shall have a leading shoot. Immediately reject dried out, damaged or unhealthy plant material before planting. All stock is to be container grown for a minimum of six (6) months prior to delivery to site.

FERTILISER

MASS PLANTING AREAS: Fertiliser shall be ‘Nutricote’ or approved equivalent in granule form intended for slow release of plant nutrients over a period of approximately nine months. Thoroughly mix fertiliser with planting mixture at the recommended rate, prior to installing plants.
TURF: Shall be Shirleys No. 17 or approved equal thoroughly mixed into the topsoil prior to placing turf.
TREES IN GRASS AND SUPER ADVANCED TREES: Pellets shall be in the form intended to uniformly release plant food elements for a period of approximately nine months equal to Shirleys Kokei pellets, analysis 6.3:1.8:2.9. Kokei pellets shall be placed at the time of planting to the base of the plant, 50mm minimum from the root ball at a rate of two pellets per 300mm of top growth to a maximum of 8 pellets per tree.

STAKING AND TYING

Stakes shall be straight hardwood, free from knots and twists, pointed at one end and sized according to size of plants to be staked.
a. 100-greater than 200litre 3x(1800x50x50mm)
Ties shall be 50mm wide hessian webbing or approved equivalent nailed or stapled to stake. Drive stakes a minimum one third of their length, avoiding damage to the root system, on the windward side of the plant.

TURF

Obtain turf from a specialist grower of cultivated turf. turf shall be of even thickness, free from weeds and other foreign matter; lay in stretcher pattern with joints staggered and close butted, perpendicular to gradient of FSL. Water immediately after laying.
TURF TYPE: Couch (Confirm with council prior to construction)

FURNITURE

TABLE SETTING
Aria Table and Benches
Table: 1800(L) x 705(W) x 720(H)mm
Bench: 1800(L) x 480(W) x 440(H)mm
Jarrah Hardwood Battens
Colour: Textura Dark Bronze
Available: Street Furniture Australia

ROUND TABLE
Size: 1100(D) X 700(H)mm
Colour: Natural Grey
Available: Satu Bumi

CUSTOM GRC CURVED SEAT
Size: 12000(L) x 5300(L) x 450(H)mm
17500 (Arc L) 5500(R)
Colour: Natural Grey
Available: Satu Bumi

PARKFIT SSPF-2002
Equipment Size: 2.9m x 1.8m
Available: Parkfit Australia
Ph: (02) 8851 7630

PARKFIT SSPF-2003
Equipment Size: 3.3m x 2.1m
Available: Parkfit Australia
Ph: (02) 8851 7630

PARKFIT SSPF-2004
Equipment Size: 3.0m x 1.5m
Available: Parkfit Australia
Ph: (02) 8851 7630

SHADE SAIL (Posts to be earthed)
Size: Max 3.5m ht
Colour: Bluestone or Gunmetal; Black powdercoat steel
Available: Greenline Ph:1800 044 200

SHELTER STRUCTURE
Steel Post: Black Powdercoat
Rafters: Hardwood Timber
Colour: Pale Eucalypt
Refer to Details

SANDSTONE LOG SEAT - Grade 2
Size: 1800 x 500 x 500mm
Available: Gosford Quarries

SANDSTONE CUBES - Grade 2
Size: 500 x 500 x 500mm
Available: Gosford Quarries

LANDSCAPE MAINTENANCE PROGRAM

Maintenance shall mean the care and maintenance of the landscape works by accepted horticultural practice as rectifying any defects that become apparent in the landscape works under normal use. This shall include, but shall not be limited to, watering, mowing, fertilising, re-seeding, returfing, weeding, pest and disease control, staking and tying, replanting, cultivation, pruning, aerating, renovating, top dressing, maintaining the site in a neat and tidy condition as follows:-

GENERAL

The landscape contractor shall maintain the landscape works for the term of the maintenance (or Plant establishment) period to the satisfaction of the council. The landscape contractor shall attend to the site on a weekly basis. Landlord to maintain all landscape areas in perpetuity (life of the development).

WATERING

Grass, trees and garden areas shall be watered regularly so as to ensure continuous healthy growth.

RUBBISH REMOVAL

During the term of the maintenance period the landscape contractor shall remove rubbish that may occur and reoccur throughout the maintenance period. This work shall be carried out regularly so that at weekly intervals the area may be observed in a completely clean and tidy condition.

REPLACEMENTS

The landscape contractor shall replace all plants that are missing, unhealthy or dead at the Landscape Contractor's cost. Replacements shall be of the same size, quality and species as the plant that has failed unless otherwise directed by the Landscape Architect. Replacements shall be made on a continuing basis after the plant has died or is seen to be missing.

STAKES AND TIES

The landscape contractor shall replace or adjust plant stakes, and tree guards as necessary or as directed by the Landscape Architect. Remove stakes and ties at the end of the maintenance period if so directed.

PRUNING

General: Prune to reflect the natural growth flowering and regrowth habit of the individual species. Shrubs: Prune after flowering - Spring and Summer and on a spot basis as required.
Hedge trimming: Schedule trimming at times which will maintain the character and design of hedges. Allow up to three times per season.
Tip pruning: To encourage development of new shoots during the active growing season. Do not remove buds before the flowering season in those plants that have terminal flowers.
Radical pruning: To maintain a hedge or formal shape or when a particular problem, growth habit, damage, or disease requires branch removal.
Trees: Prune to eliminate diseased or damaged growth, avoid inter-branch contact and thin out crowns in a natural manner, maintain sight lines to signs and lights, or maintain visibility for personal security. Tree branch removal to AS 4373. Give notice and engage a suitably qualified ‘arborist’.

MULCHED SURFACES

All mulched surfaces shall be maintained in a clean and tidy condition and be reinstated if necessary to ensure that a depth of 75mm is maintained. Ensure mulch is kept clear of plant stems at all times. Remove all mulching materials off lawn or paved areas and maintain a clean and tidy appearance when viewed on a weekly basis.

PEST AND DISEASE CONTROL

The landscape contractor shall spray against insect and fungus infestation with all spraying to be carried

out in accordance with the manufacturer's directions. Report all instances of pests and diseases (immediately that they are detected) to the Landscape Architect.

GRASS AND TURF AREAS

The landscape contractor shall maintain all grass and turf areas by watering, weeding, re-seeding, rolling, mowing, trimming or other operations as necessary. Seed and turf species shall be the same as the original specified mixture. Grass and turf areas shall be sprayed with approved selective herbicide against broad leaved weeds as required by the Landscape Architect and in accordance with the manufacturer's directions. Grass and turf areas shall be fertilised once a year in autumn with “Dynamic Lifter” for lawns at a rate of 20kg per 100m2. Fertiliser shall be watered in immediately after application. Irregularities in the grass and turf shall be watered in immediately after application.
Grass and turf areas shall be kept mown to maintain a healthy and vigorous sward. Mowing height: 30-50mm.

WEED ERADICATION

Eradicate weeds by environmentally acceptable methods using a non-residual glyphosate herbicide (eg. ‘Roundup’) in any of its registered formulae, at the recommended maximum rate. Regularly remove by hand, weed growth that may occur or recur throughout grassed, planted and mulched areas. Remove weed growth from an area 750mm diameter around the base of trees in grassed areas. Continue eradication throughout the course of the works and during the maintenance period.

SOIL SUBSIDENCE

Any soil subsidence or erosion which may occur after the soil filling and preparation operations shall be made good by the landscape contractor at no cost to the client.

MAITENANCE PERIOD: (26 Weeks) - Confirm with Project Manager

IRRIGATION PERFORMANCE SPECIFICATION NOTES

IRRIGATION OVERVIEW - Confirm with Project Manager at tender stage

EXTENT (Setback, Carpark, Garden and Turf Areas)

All mass planting landscape areas and trees are to have full coverage by a fully automatic irrigation system. The design, materials and installation are to be in accordance with Sydney Water Codes and all relevant Australian Standards.

1. An automatic irrigation system is to be installed to all turf and garden bed areas.
2. The irrigation system shall be designed and installed by a licensed contractor to relevant Australian standards and Sydney water guidelines.
3. The irrigation system shall be connected into the rainwater tank system and pump

DRIPLINE

Provide 13mm dripline to all garden bed areas with appropriate 13mm joiners. Dripline to be Toro drip or similar with 400mm centre drippers.
Install line at 500mm spacings with the first line to be 150mm in from edge. Install dripline after planting and prior to mulching to allow for an adequate mulch cover. Anchor at 1.5m maximum intervals with u-shaped stakes. Dripline pattern to suit planting.

CONTROL VALVES

24v solenoid actuated hydraulic valve with flow control. Control valves to be Toro ezflow series solenoids 25mm or approved equal. Provide a gate valve of the same size immediately upstream of each valve. House both valves in a high impact plastic valve box with a high impact plastic cover at finished ground level. Support the box with bricks on each side. Controller to be Toro greenkeeper or approved equal with a rain switch.
Install a master valve/pressure regulating valve equal to Toro p220 with exreg pressure regulation valve. Filter to be installed equal to Toro y filter 75mm screen filter.

CONTROL WIRES

Connect the control valves and soil moisture sensor to the controller with double insulated underground cables laid alongside piping where possible. Lay intertwined for their full length without joints except at the valves and branches off common wires. Provide waterproof connectors.

Provide a backflow prevention device to Sydney water standards AS 3500.

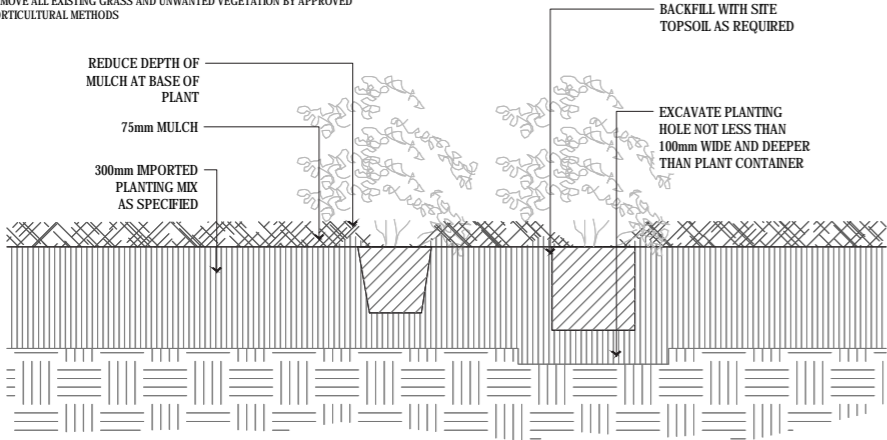
RELEVANT AUSTRALIAN STANDARDS

Soil: AS4419, AS3743, AS4454.
Mulch: AS4454.
Tree Stock: AS2303.
Pruning: AS4373.
Tree Protection: AS4970.
Contractors to comply with the above Australian Standards.

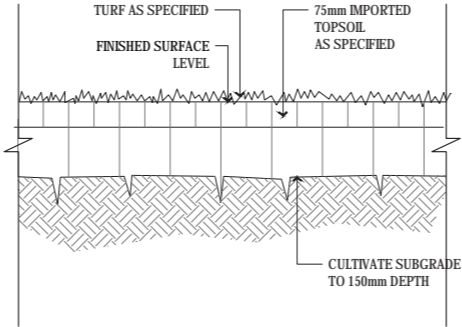
TYPICAL LANDSCAPE DETAILS

NOTE:

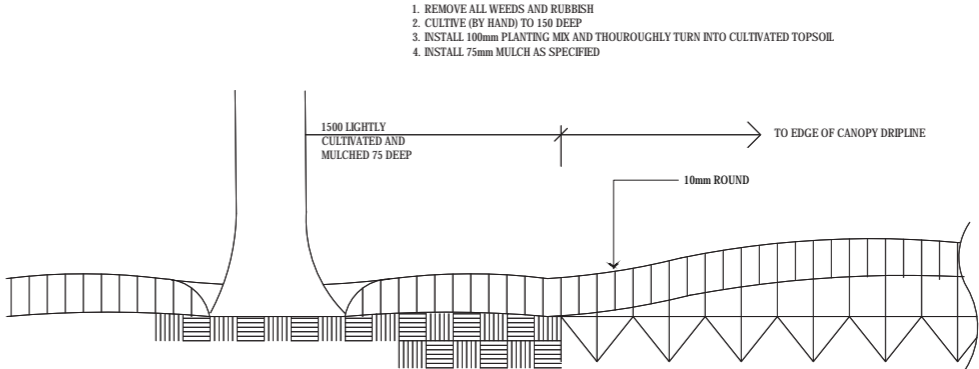
REMOVE ALL EXISTING GRASS AND UNWANTED VEGETATION BY APPROVED HORTICULTURAL METHODS



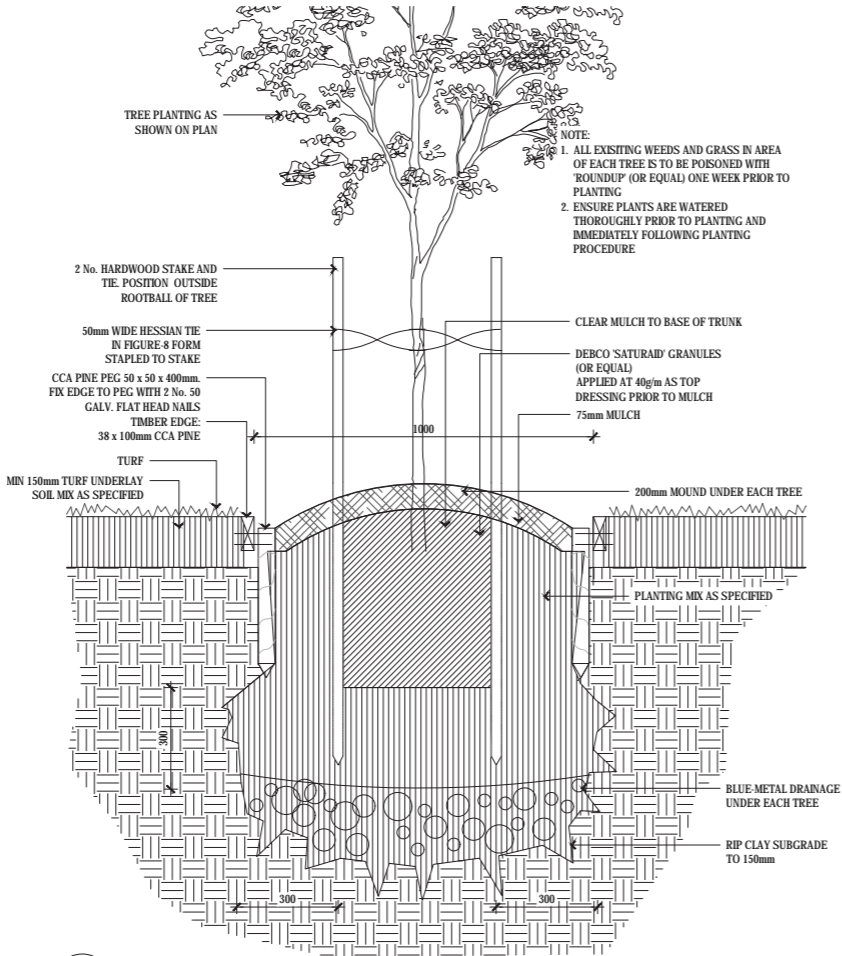
01 MASS PLANTING BED
1:10



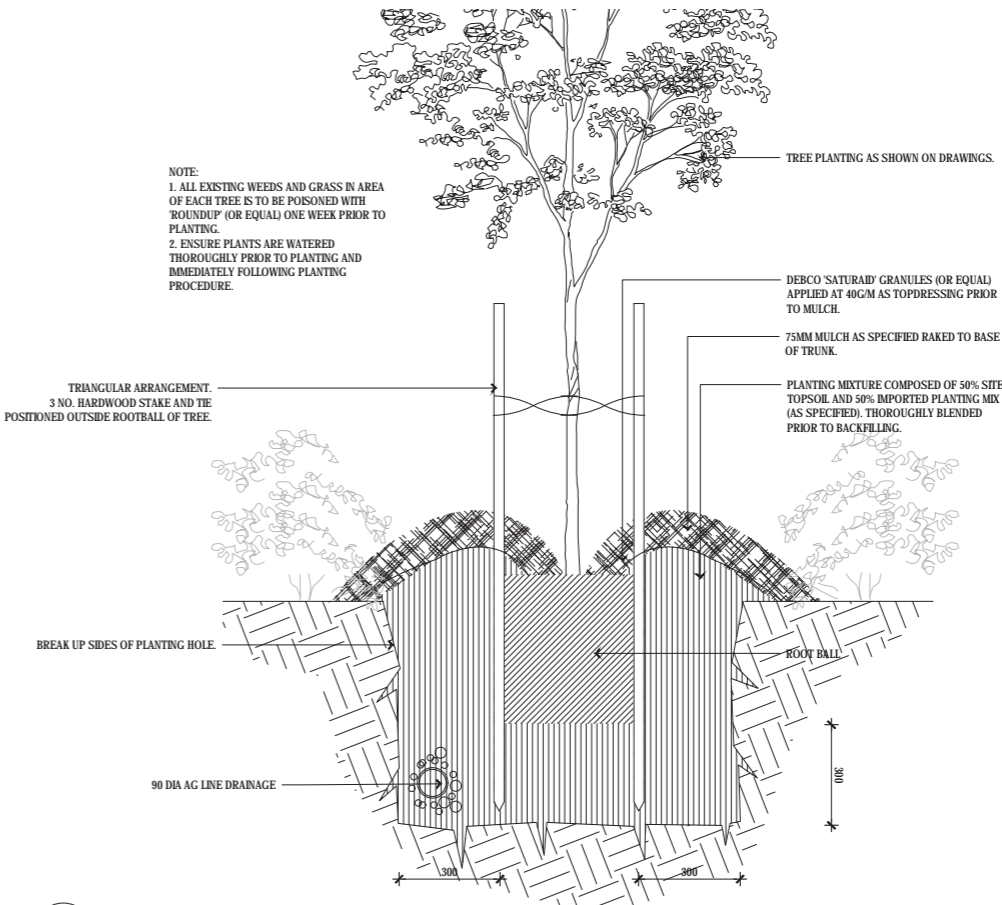
02 NEW TURF
1:10



03 PLANTING UNDER EXISTING TREE
1:10



04 TREES PLANTING IN GRASS
1:10



05 SEMI-MATURE TREE PLANTING
1:10